



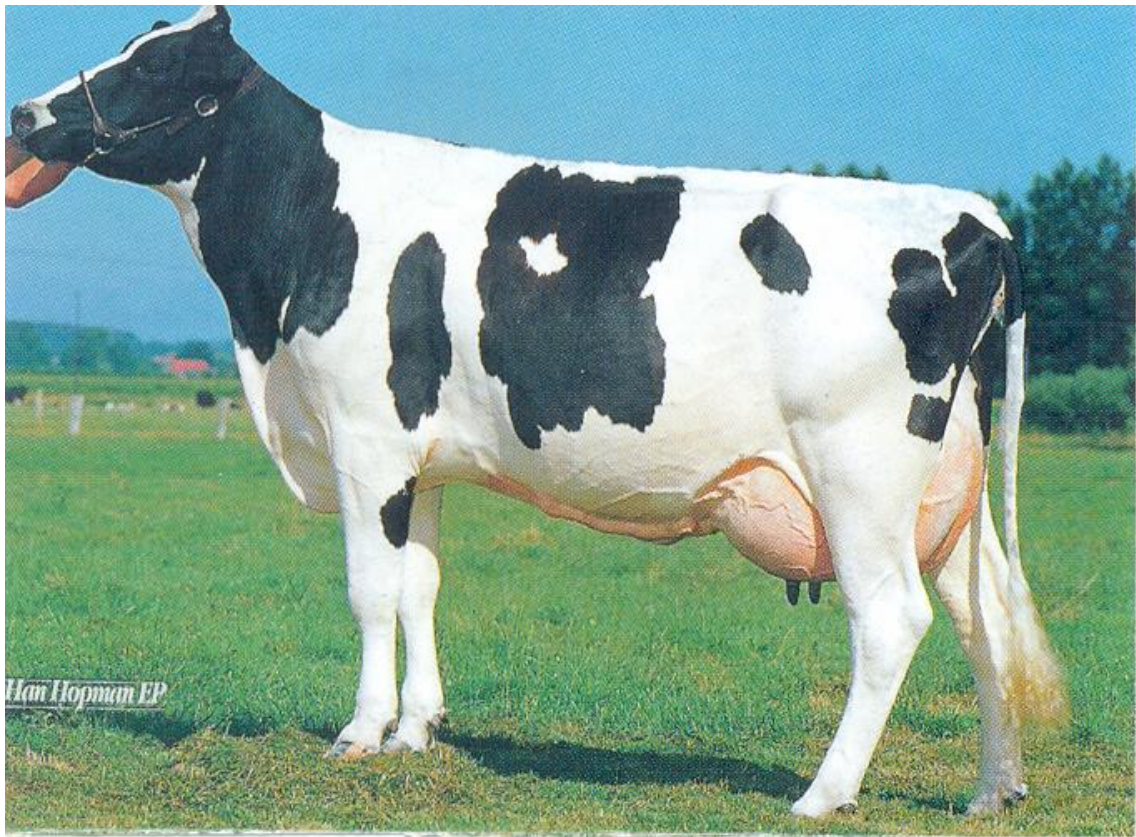
Government of India

MINISTRY OF AGRICULTURE & FARMERS WELFARE

DEPARTMENT OF ANIMAL HUSBANDRY, DAIRYING & FISHERIES

CENTRAL CATTLE BREEDING FARM HESARAGHATTA, BANGALORE- 88

Telefax: 080-28466295 Email: ccfbangalore@gmail.com



CENTRAL CATTLE BREEDING FARM, HESARAGHATTA, BANGALORE.

1. INTRODUCTION:

This Farm was sponsored & started by Indian Council of Agricultural Research in 1962 under the name of **JERSEY CATTLE BREEDING FARM** during THIRD five year plan. Later, it was transferred to the Ministry of Agriculture, Dept. of Agriculture and the name of Jersey Cattle Breeding Farm was changed to **CENTRAL CATTLE BREEDING FARM** with effect from 07.06.1975.

Initially, the farm had parental stock of pure Jersey breed cattle which was later transferred to CCBF, Sunabeda, Orissa after takeover of this farm as above. Simultaneously, Holstein Friesian breed was introduced with the assistance received from DANIDA AID MISSION with a foundation stock of 78 Heifers and 20 Bulls. Later 22 pregnant HF heifers were imported from Israel in 1996 (17.12.96) for augmenting the herd-stock.

Since beginning, this farm serves the nation by providing male germ-plasm for cross breeding of native cattle. So far more than 1063 bulls/bull calves (251J; 812HF) have been produced/supplied to various Governmental organizations and progressive farmers in the country for breeding purposes.

2. OBJECTIVES:

- a. develop and establish pure bred HF bull mother herd with comparable milk production as in their home country through intensive management and culling based on their performance.
- b. breed propagation by producing& selling purebred HF bull calves/semen for breeding operations incl. crossing through various developmental agencies (public/private sector).
- c. Training/Demonstration of scientific breeding and farm management practices to the farmers.

3. LIVESTOCK :

A. BREED CHARACTERS (HOLSTEIN FRIESIAN-HF):

Holstein Friesian (HF) is the official name of the breed in America. This breed was originally developed in two provinces of Holland- North Holland & West Friesland and is descendents of the wild cattle *Bos primigenius*. HF is one of the largest cattle breed with high milk productivity.

Standard weight is 680 kgs for cows & 1020 kgs for bulls. They are black& white in colour with wide variations from nearly all white to all black, black & white patches throughout body, white interspersed grey or mixed black & white red, brown dun etc, red & white. Holsteins are ruggedly built with large middles& udders. The head is long& comparatively narrow with a straight profile, most desirable type is slightly rounding over the withers & straight in the thighs. HF cattle though very large show refinement.

Females show a very distinct development of dairy temperament & no evidence of beefiness while in milk. They should show a good constitution with wide, deep-chests, deep & well-sprung ribs. Top-line should be straight; the rump should be long & level. Attachment of fore & rear udder should be strong & the udder should be well-balanced. Holstein bulls should be very masculine but should have the same general type as the females with straight horns. Holstein cow is rather phlegmatic & docile whereas bulls are more nervous, less-trust worthy in their dispositions with frequent viciousness.

B. HERD STRENGTH-ANIMALS:

S NO	CATEGORY OF ANIMALS	Rationalized Strength	2012-13	2013-14	2014-15
1	Milch cows	65	56	42	57
2	Dry cows		26	35	47
3	Heifers above 2.5 yrs	14	04	12	11
4	Heifers 2 to 2.5 yrs		12	13	10
5	Heifers 1 to 2 yrs		23	32	25
6	Young Stock (Female) 6-12 mo	06	13	16	15
7	Female calves 0-6 months	09	22	09	20
8	Male calves above 12 months	15			01
9	Male calves 6-12 months		-	02	04
10	Male calves 0-6 months		04	07	19
11	Teaser	-	-	-	-
12	Bullocks	-	-	-	-
Total		109	160	168	209

Present Strength: 202

C. Total Bull calves Production & Sales (till 31.12.15):

	Produced	Sold
Pure Jersey bull calves	-	251
Pure HF bull calves	-	812
Total	-	1063

Yearly Bull Calves Produced (Target: 30 p.a.):

2011-12	2012-13	2013-14	2014-15	2015-16 (till 31.12.15)
25	29	26	42	10

Yearly Bull Calves Distributed (Target: 30 p.a.):

2011-12	2012-13	2013-14	2014-15	2015-16 (till 31.12.15)
20	31	18	27	16

D. Yearly Milk Production, Distribution and Wet/Herd Average:

YEAR	MILCH ANIMALS (AVG No)	WET AVG (kg)	HERD AVG (kg)	MILK PRODUCTION (kg)
2011-12	-	-	-	2,45,000
2012-13	32.65	15.3	10.72	2,72,125
2013-14	52.83	15.34	9.66	2,95,804
2014-15	47.28	13.94	6.53	2,40,729
2015-16 (till 31.12.15)	32	-	-	1,58,737

Milk supplied to: a. Bangalore Dairy (KMF-State Milk Cooperative) b. Calves
c. Local purchasers d. Staff. **Targets: Production-3.0 lakh Kg p.a.; Wet Average- Overall-17kg (14.75kg-I Lactation; 18.36kg ->I Lactation)**

E. TRAINING OF FARMERS (Target 400 Persons p.a.):

2011-12	2012-13	2013-14	2014-15	2015-16 (till 31.12.15)
502	403	366	462	295

F. DETAILS ABOUT VACCINATION/DISEASE TESTING IN THE HERD (till 30.06.15):

DISEASE	DATES VACCINATED	DISEASE	DATES TESTED
FMD	08.05.2015	TB	26.03.2015
BQ	17.06.2014	JD	26.03.2015
HS	17.06.2014	IBR	-
Anthrax	- (No Outbreaks)	Brucellosis	26.03.2015
Deworming*	16.03.2015 (Herd)		

*- Calves Monthly Once. Adults-yearly twice.

G. PRODUCTIVE& REPRODUCTIVE PERFORMANCE OF THE HERD.

SNo	Parameters	Target	2012-13	2013-14	2014-15
1	Average Pedigree (305 day milk yield-kg)	5000	4941.52	4791.57	4821.25
2	Wet Avg (all milch cows-kg)	17	15.3	15.34	13.94
3	Herd Avg (all adult cows-kg)	-	-	9.66	6.53
4	Avg I Lactation 305 day milk-yield (kg)	-	-	-	-
5	Avg Lactation length (days)	-	-	305	305
6	Avg Fat %	-	3.68	3.6	3.7
	Avg SNF %	-	8.48	8.55	8.50
7	Age at I AI (=Puberty; in Heifers-months)	-	-	-	-

8	Age at 1 calving (months)	28	33.66	31.0	30.25
9	Conception %	-	-	45.60%	52.77
10	Avg No. of Services Per Conception	3.0	-	2.19	1.90
11	Avg Service Period (days)	130	162.65	223.31	187.92
12	Avg Dry Period (days)	-	-	181	239
12	Avg Open Period (days)	-	78.74	104.56	162.92
13	Avg Inter-Calving Period (days)	410	477.78	440.34	504.19
14	Bull Calf Production (27% Breedable Popln)	17	29	26	42
15	Bull Calf Distribution (27% Breedable Popln)	17	31	18	27
16	<u>Mortality %</u> a. 0-6 months	12%	1.36%	0.69%	--
	b. total	3%	-	0.7%	0.56%
				(15/2124)	(13/2286)

4. AGRICULTURE:

A. FARM AREA & UTILISATION

Farm Land position	Area (Hectare)
Total Farm area	60*
Agricultural area	37
Under Irrigation 12.8 ha	
Under Rainfed 24.2 ha	
Non Agricultural area	16
(Buildings, sheds, quarters, roads, park, temple etc)	

B. CROPPING DETAILS:

Cropping Season& Intensity:

Irrigable land : 03-05 crops per year (Kharif, Rabi, Other period).

Non Irrigable land: 01 crop per year (Kharif).

Annual Rainfall: 87.5cm – 100cms (35-40 inches)

Temperature:

	Summer	Winter
Maximum (*C)	37.0	20.5
Minimum (*C)	28.7	14

Soil Types: Red Loamy, Sandy & Clay.

C. FODDER CROPS GROWN IN FARM:

Fodder types:

Cereal crops - Maize.

Legume crops –Berseem, Cowpea, Lucerne (few as Yield is poor; proteinacious).

Perennial grasses – Guinea, Rhodes, Co-3 grass, local grass..

Hedges/Trees – Subabul (12No), Mulberry (2 No), Pipal (2No), Palwa (20No), Banyan (3No).
 Range Grasses/Legumes – Local grass.

Acreage of Fodder Types grown-(hectare):

Fodder types	2012-13	2013-14	2014-15	2015-16 (till 30.06.15)
Cereals	25.5	29.2	29.5	6.0
Grasses	8.2	13	16	10
Legumes	-	-	-	-
Cereals & Legumes	13.2	12.0	10.0	-
Cereals & Grasses	-	-	-	-
Grasses & Legumes	-	-	-	-
Total	46.9	54.2	55.5	16.0

5 . REVENUE RECEIPTS (Rs in Lakhs): Target: Rs.40.00lakh Now 60Lakhs

2011-12	2012-13	2013-14	2014-15	2015-16 (till 31.12.15)
42.21	65.76	65.59 (excl. Sec Deposit)	53.62 (excl. SD; <u>No Animal Auction</u>)	31.76

Revenue Sub-Head	2013-14	2014-15	2015-16 (till 31.12.15)
Sale of Milk	5506012	4660894	-
Sale of Bull	503000	692000	-
Sale of Culled Animals	488300	-	-
Misc. Receipts	52939	8796	-
Fodder Sale	7918	-	-
Total	6558169* (excl. SD)	5361690	31,76,000